

L2494 Rev. O 10/00

SERVICE INSTRUCTIONS: These Service Instructions are intended to be used by qualified personnel authorized Enerpac service centers. Users of Enerpac ATM-3 Heavy-duty Alignment Tool should see the Instruction Sheet for operation information.

1.0 DISASSEMBLY AND LUBRICATION

1. Remove Pull Pin (No. 31). This will release the Lift hook (No. 30). See Fig 1.
2. Using a 4 mm Allen Key loosen and remove the seven Screws (No. 19). This should be done on the side of the tool that has the Serial No and date.
3. Still using the 4 mm Allen Key unscrew the Retaining Screw (No. 27) and remove the Release Knob (No. 28).
4. Using a small flat screwdriver unclip the Spiral Clips (No. 13) from the Roller Pins (No. 12).
5. This side of the tool can now be removed.
6. The Inner Roller (No. 14), the Needle Bearing (No. 15), and the Outer Roller (No. 16) can now be slipped off the Pins (No. 12) — see Fig 2. These can now be cleaned and examined for wear. If in good condition they can be lubricated using a heavy-duty grease for reassembly.
7. In order to remove the Drop Leg (No. 24) use a 4 mm Allen Key to loosen the Screw (No. 21) until the Drop Leg can be lifted out — see Fig 3. The Drop Leg Lock Mechanism (No. 29) can also be lifted out at this stage. For reassembly of the Drop Leg Lock Mechanism see Section 2.1 below.
8. To remove the Thrust Bearing Set (No. 6) use a small flat screwdriver — see Fig 4. Insert this into the clip access point on the Swivel (No. 5) and push in and upwards simultaneously to remove the Spring Clip (No. 4). Place the Swivel in a vice. Using a 4 mm Allen Key loosen and remove the Retaining Screw (No. 9). The Thrust Bearing Set can now be removed. Clean and examine the Thrust Bearing Set (No. 6) for wear. If they are in good condition they can be greased for reassembly. For reassembly of the Thrust Bearing Set see 2.2 below.

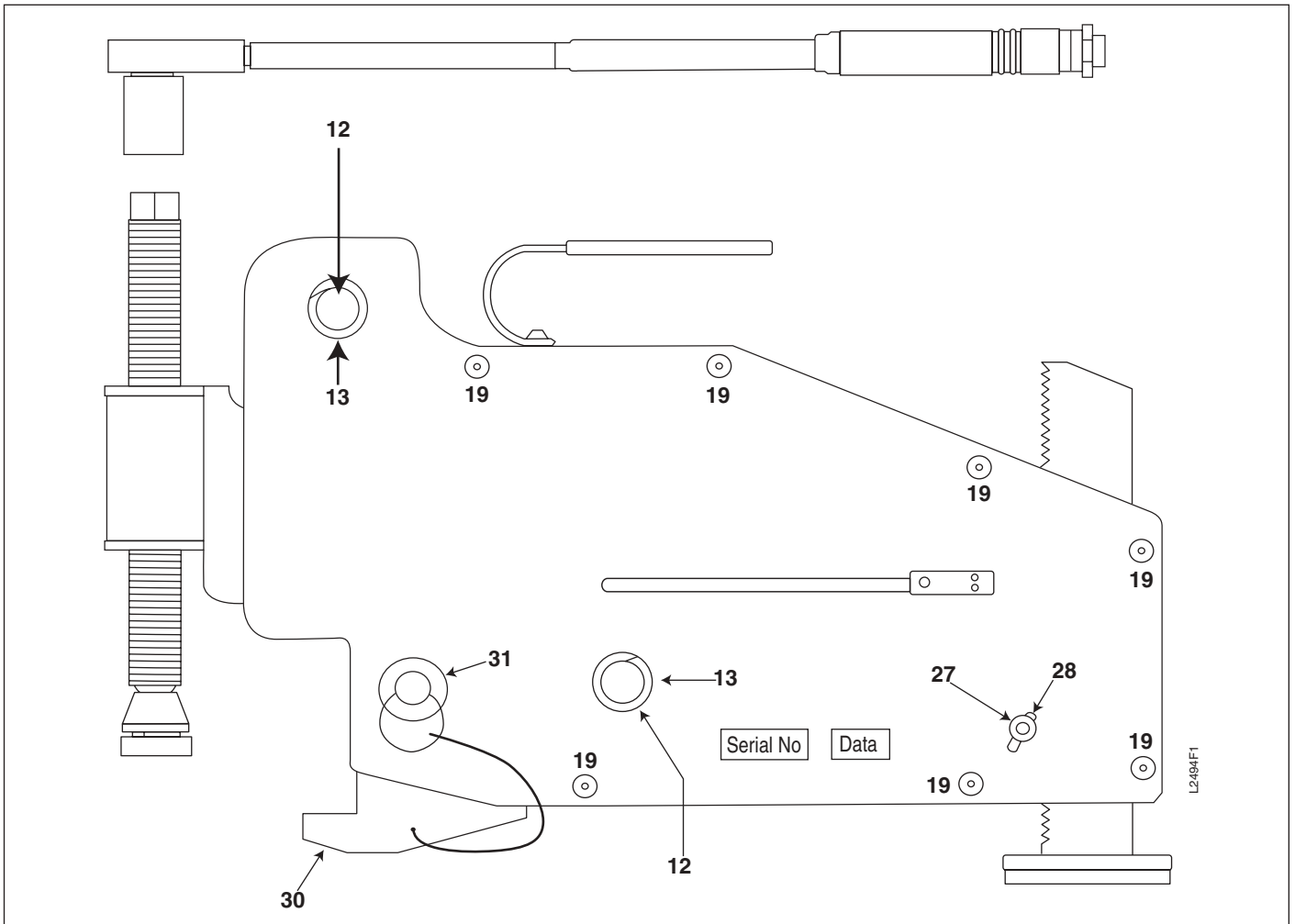


Figure 1

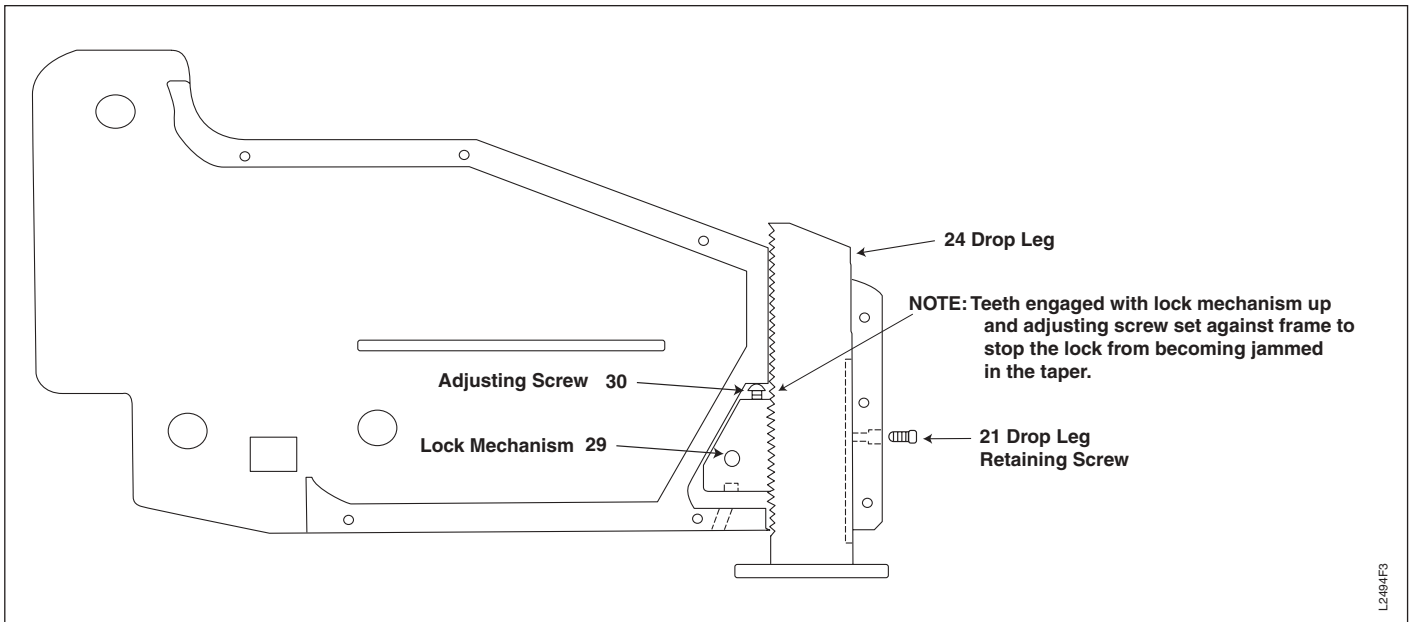


Figure 3, Drop Leg Assembly

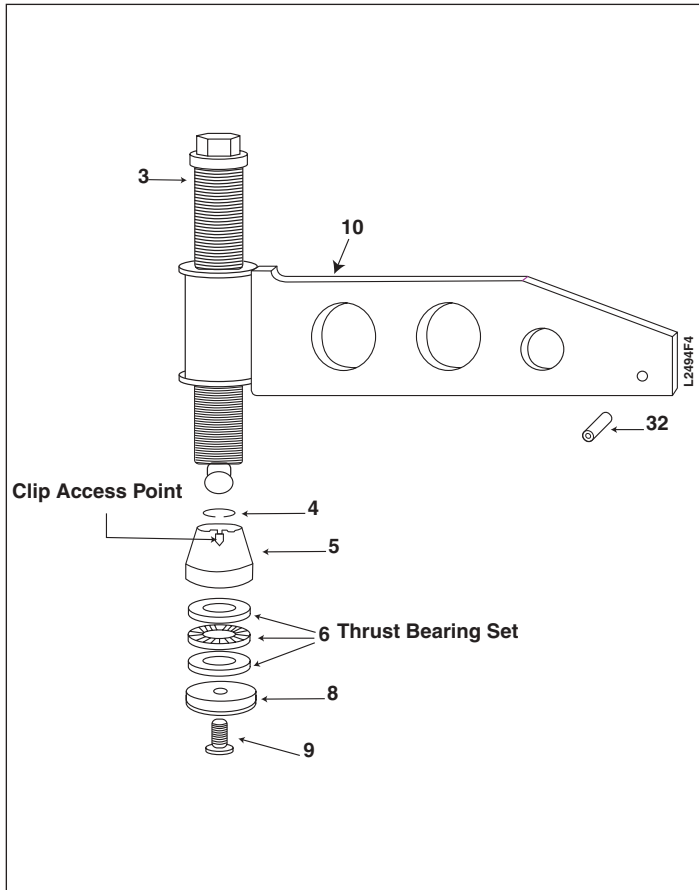


Figure 4, Thrust Bearing Assembly

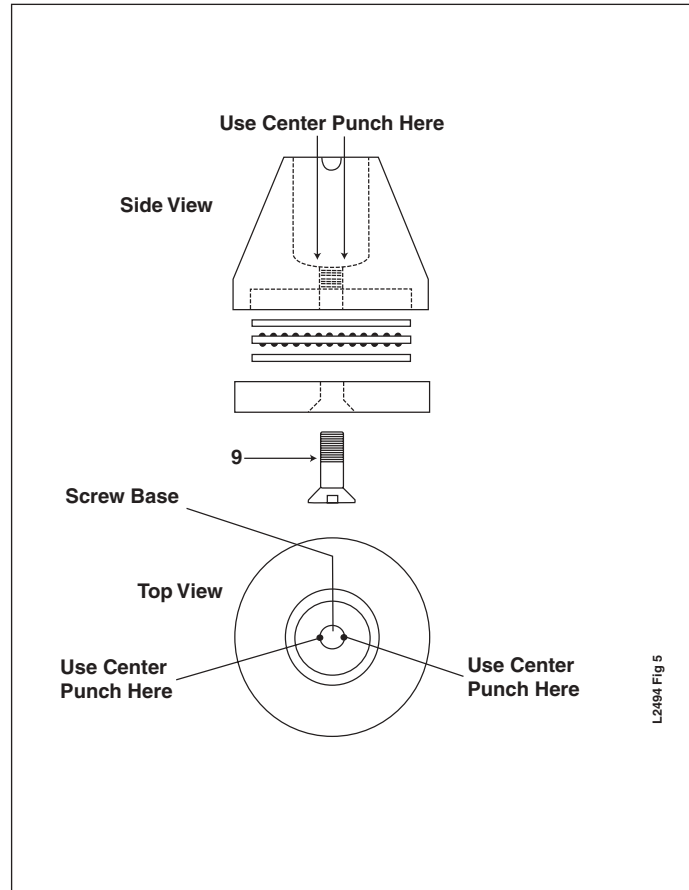


Figure 5

Enerpac Worldwide Locations◆ e-mail: info@enerpac.com◆ internet: www.enerpac.com**Australia**

ENERPAC, Applied Power Australia Ltd.
Block V Unit 3
Regents Park Estate
391 Park Road
Regents Park NSW 2143
(P.O. Box 261) Australia
Tel: +61 297 438 988
Fax: +61 297 438 648

Canada

Applied Power Canada Ltd.
6615 Ordan Drive, Unit 14-15
Mississauga, Ontario L5T 1X2
Tel: +1 905 564 5749
Fax: +1 905 564 0305

Toll Free:

Tel: +1 800 268 4987
Fax: +1 800 461 2456

China

Applied Power China Ltd.
1F, 269 Fute N. Road
Waigaoqiao Fre Trade Zone
Pudong New District
Shanghai, 200 131
China
Tel: +86 21 5866 9099
Fax: +86 21 5866 7156

**France, Turkey, Greece,
Africa, Middle East**

ENERPAC S.A.
B.P. 200
Parc d'Activités
du Moulin de Massy
F-91882 Massy CEDEX (Paris) France
Tel: +33 1 601 368 68
Fax: +33 1 692 037 50

**Germany, Switzerland,
Austria, Eastern Europe**

ENERPAC
Applied Power GmbH
P.O. Box 300113
D-40401 Düsseldorf
Germany
Tel: +49 211 471 490
Fax: +49 211 471 49 28

Hong Kong

ENERPAC
Room 907 Workingberg
Commercial Building
41-47 Marble Road
North Point
Tel: +852-2561 6295
Fax: +852-2561 6772

India

ENERPAC
Hydraulics Technology
(India) Pvt Ltd
Plot No. A-571
MIDC, TTC Industrial Area
Mahape-400 701
Navi Mumbai, India
Tel: +91 22 769 47 78
Fax: +91 22 769 84 73

Italy

ENERPAC
Applied Power Italiana S.p.A.
Via Canova 4
20094 Corsico (Milano)
Tel: +39 2 486 111 00
Fax: +39 2 486 012 88

Japan

Applied Power Japan Ltd.
1-1-11, Shimomae
Toda-shi
Saitama Pref.
Japan 335-0016
Tel: +81-48-430-1055
Fax: +81-48-430-1066

Mexico

ENERPAC Applied Power
Mexico S.A. de C.V.
Avenida Principal
La Paz #100
Fracc. Industrial La Paz
42084 Pachuca, Hidalgo
Tel: +52 771 337 00
Fax: +52 771 838 00

**The Netherlands, Belgium,
Luxembourg, Sweden, Denmark,
Norway, Finland**

ENERPAC B.V.
Storkstraat 25 /
P.O. Box 269, 3900 AG Veenendaal
The Netherlands
Tel: +31 318 535 911
Fax: +31 318 525 613
+31 318 535 848

Singapore

Applied Power Asia Pte Ltd
No. 8, Ang Mo Kio,
Industrial Park 2
#01-00
Singapore 569500
Thomson Road
P.O. Box 114
Singapore 915704
Tel: +65 484 5108
Fax: +65 484 5669

South Korea

ENERPAC
Applied Power Korea Ltd.
163-12 Dodang-Dong
Choong-Ku, Buchun-shi
Kyunggi-Do
Republic of Korea
Tel: +82 32 675 08 36
Fax: +82 32 675 30 02

Spain, Portugal

ENERPAC
Applied Power International S.A.
Avda. Camino de lo Cortado 21
San Sebastian de los Reyes
28709 Madrid
Spain
Tel: +34 91 661 11 25
Fax: +34 91 661 47 89

United Kingdom, Ireland

ENERPAC Limited
Unit 3, Colemeadow Road
North Moons Moat
Redditch
Worcester B98 9BP
United Kingdom
Tel: +44 01527 598 900
Fax: +44 01527 585 500

**USA, Latin America
and Caribbean**

ENERPAC
P.O. Box 3241
6101 N. Baker Road
Milwaukee, WI 53209 USA
Tel: +1 262 781 6600
Fax: +1 262 781 1049

User inquiries:

+1 800 433 2766

Distributor inquiries/orders:

+1 800 558 0530

All Enerpac products are guaranteed against defects in workmanship and materials for as long as you own them.

For your nearest authorized Enerpac Service Center, visit us at www.enerpac.com

100400

NS1000RO